

COMMUNITY EMPOWERMENT THROUGH RAINWATER HARVESTING DESIGN

A PARTICIPATORY EXPERIENCE IN THE
ECUADORIAN CENTRAL HIGHLANDS

QUARTA S., MERINO J, BORGIA C.,
FLUID FOUNDATION

INTERNATIONAL
MUS WORKSHOP,
KATHMANDU,
25-26 Feb 2016

INTRODUCTION

- Re-design of rainwater harvesting systems through the Katalysis approach in the community of Basquitay.
- Empowering women by involving them in the experience-based process.

INTRODUCTION

RESEARCH QUESTIONS

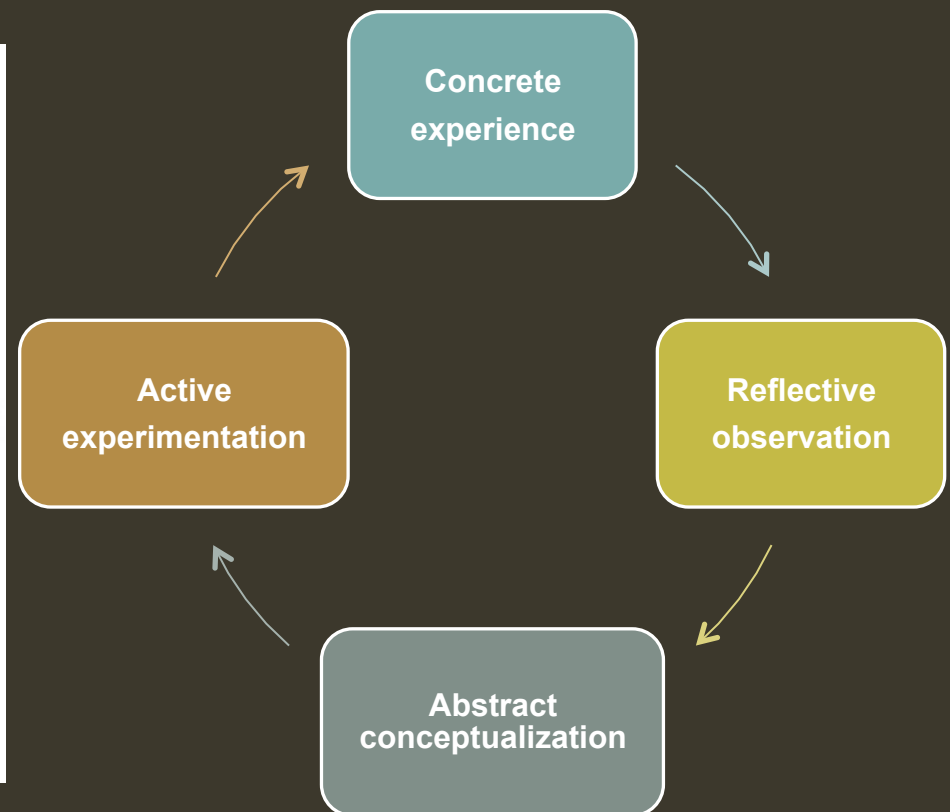
- Is the Katalysis approach successful in re-designing rainwater harvesting systems?
- Does involving women in the process enable them to influence the decision-making process in the community?
- How can learning and knowledge exchange be used for up-scaling this project?

METHODS

Katalysis approach



Kolb learning cycle



METHODS

STUDY AREA

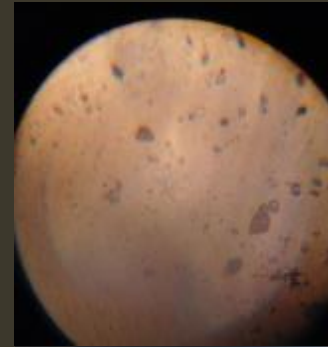


RESULTS

WATER SOURCES



RESULTS EXPERIMENTING



RESULTS

COMMUNITY EMPOWERMENT



CANALETAS *Primera descarga*

La primera lluvia limpia el techo y las canaletas. En seguida se conecta el tubo para direccionar el agua limpia al tanque. Filtrar y hervir el agua antes del consumo
Autor: Manuela Chonga, Basquitay

Materiales

- 2 tubos de 3 m en PVC, 4" - 10 \$
- Alambre metalico - 1 \$
- 1 botella plastica reciclada
- Tanque

Instalación

- 1 día de mano de obra - 25 \$
- 45 \$**



El tanque de 700 litros de Manuela se llena en 2 horas de fuerte lluvia

Ventajas

- Evita acumular suciedad en el agua
- Ahorra tiempo de limpieza del tanque
- Se instala en 30 segundos

Desventajas

- Se pierde la primera agua de lluvia
- Se instala bajo la lluvia

DISCUSSION AND CONCLUSION

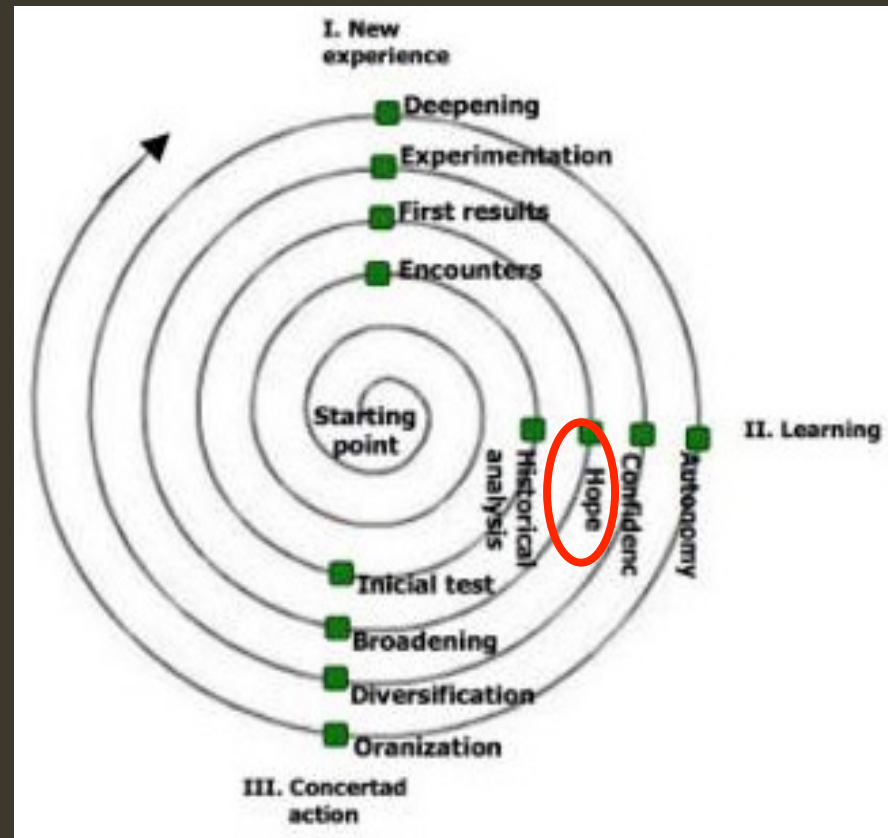
- The experience-based approach proved successful in engaging the community.
- Women gained self-confidence through their experience.



DISCUSSION AND CONCLUSION

- The Katalysis approach takes time
- The type of support offered is not always compatible with output-oriented donor financing schemes.

DISCUSSION AND CONCLUSION



RECOMMENDATIONS

- Create enthusiasm in the community with experiences that involve fun discoveries.
- Involve community representatives and elected authorities throughout the process.
- People involved in the activities (women) should participate in the scale up of the project, strengthening their role.

ACKNOWLEDGEMENTS

- The community of Basquitay
- EkoRural
- Wageningen University