

Guidelines for Planning and Providing Multiple Use water Services (MUS)

MUS Group www.musgroup.net



ICID•CIID



Universidad de Valie



Enabling poor rural people to overcome poverty



USAID FROM THE AMERICAN PEOPLE



Pump Aid

'Water for Life'



What is MUS ?



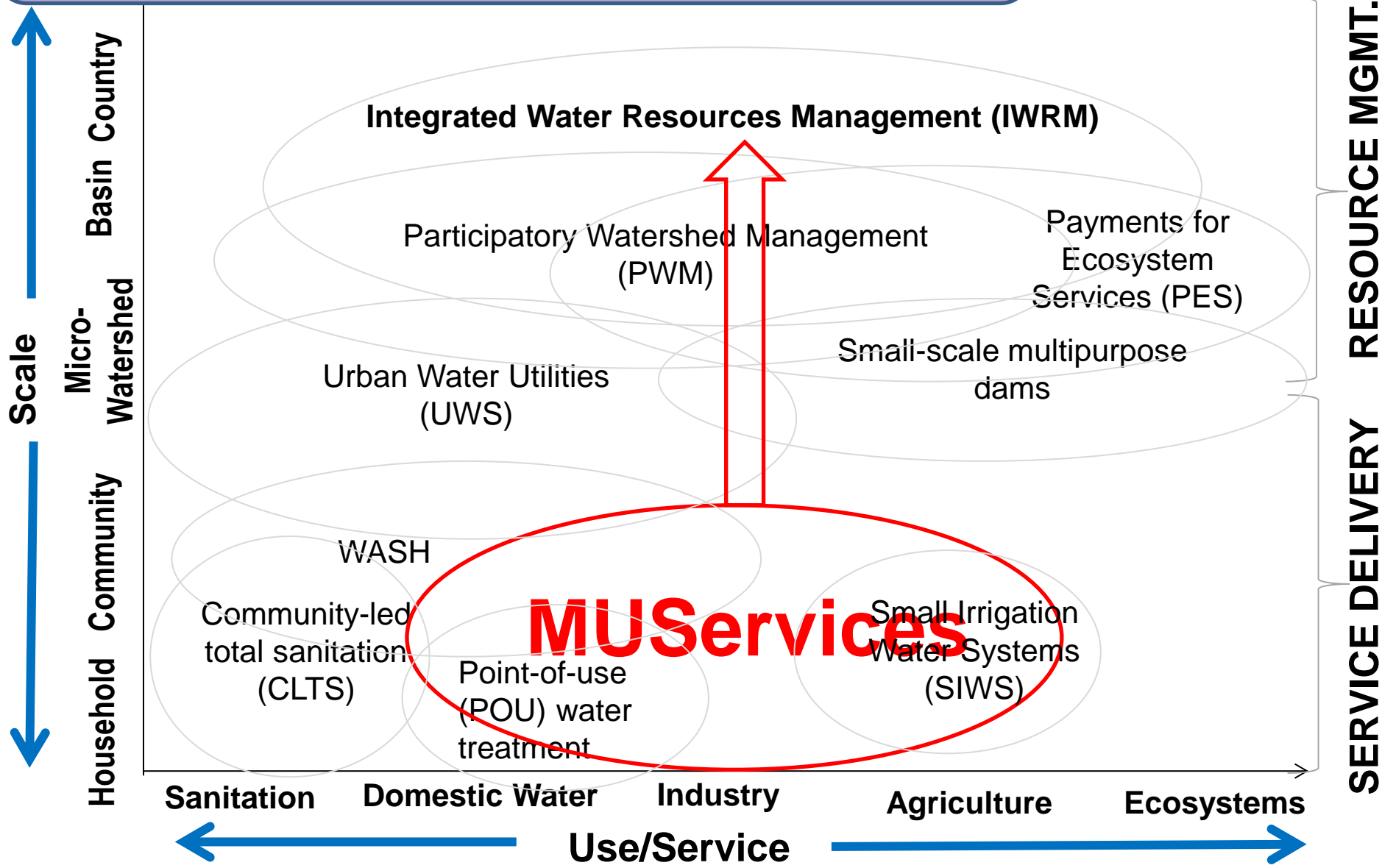
A water services approach that takes people's multiple water needs as starting point of planning infrastructure construction or rehabilitation and management.

So an approach for :

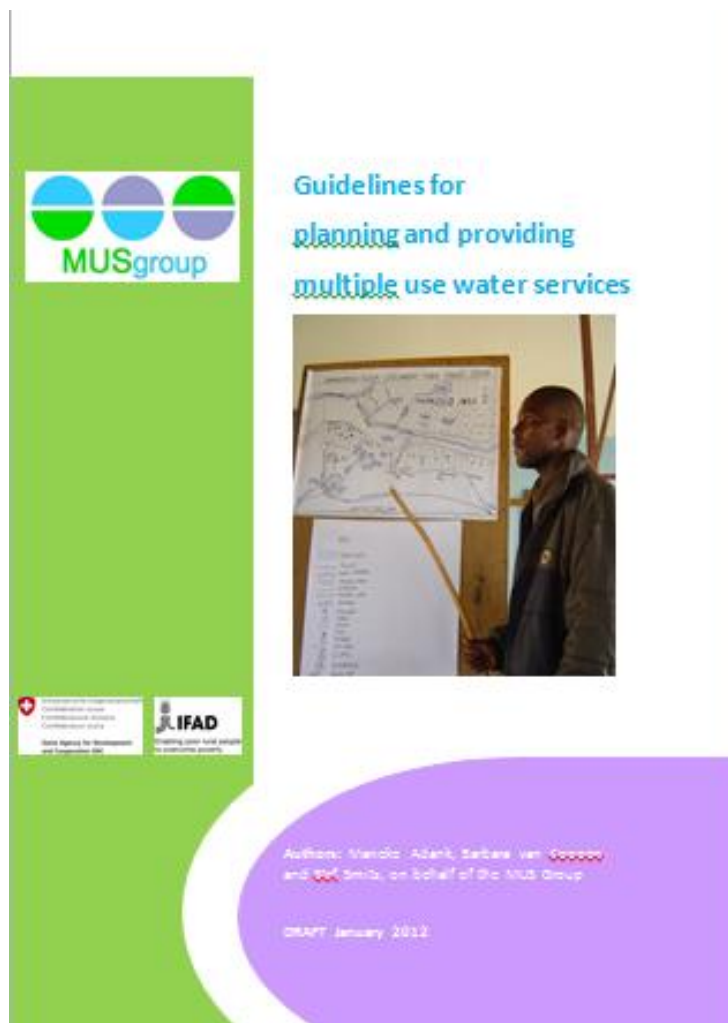
1. Designing multi-purpose infrastructure for cost-effective health, food security, income, labor-saving, etc
2. Using and re-using multiple sources for resilient and sustainable management of the local water cycle
3. Facilitating community-driven planning for cost-effective and sustainable development

MUS in the water sector's landscape

(adapted from: Pacific Institute)



Guidelines for planning and providing MUS



Synthesis of
MUS innovation
and upscaling since
early 2000s

by MUS Group
members

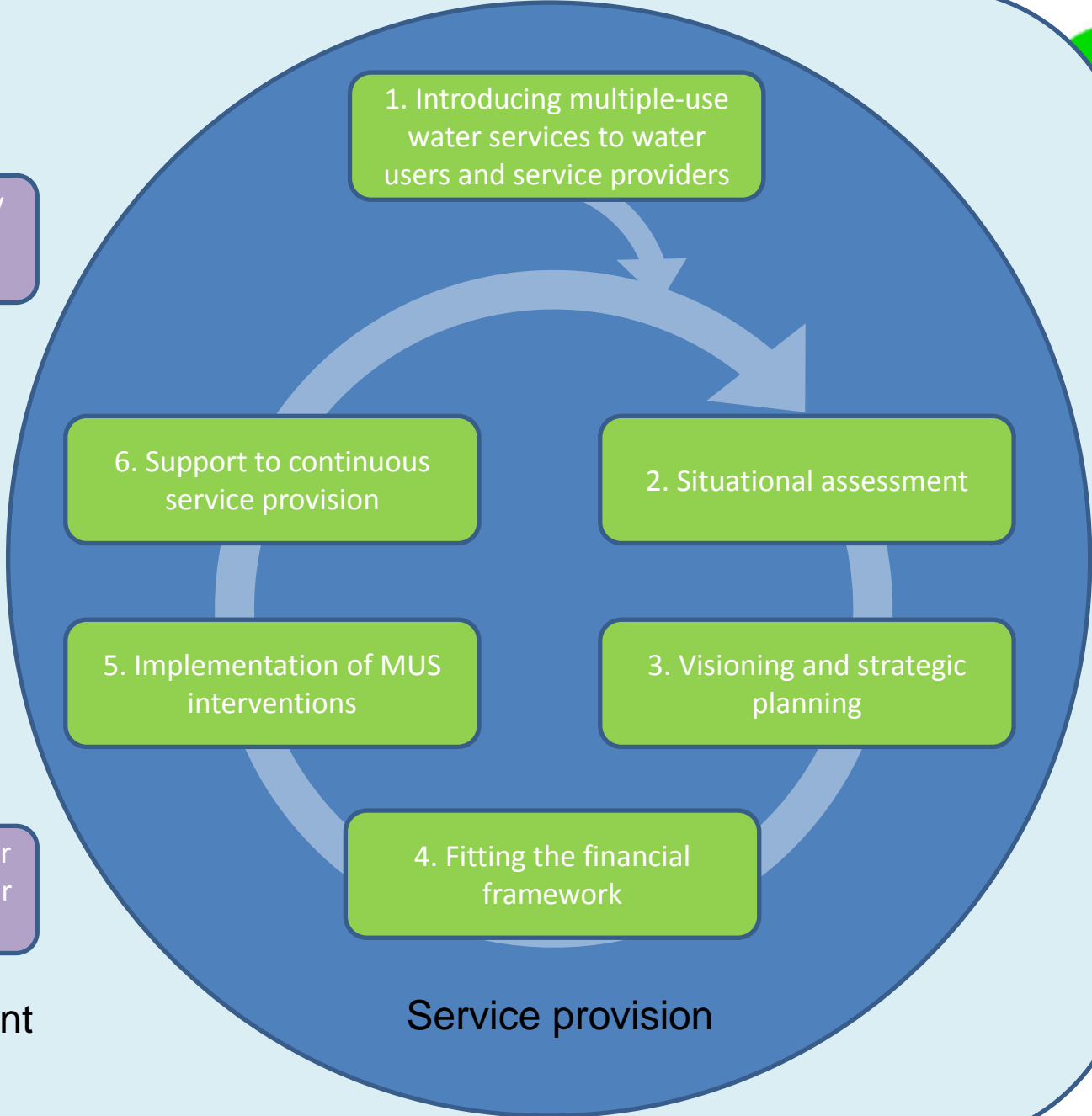
Adank, M., B. van Koppen, and Smits, S.
Supported by IFAD and SDC



A: Evidence-based advocacy on potential and barriers of MUS

B: Capacity development for an enabling environment for MUS

Enabling environment



1. Introducing multiple-use water services to water users and service providers

2. Situational assessment

3. Visioning and strategic planning

4. Fitting the financial framework

5. Implementation of MUS interventions

6. Support to continuous service provision

Service provision

Part 2

1. Introducing multiple- use water services to water users and service providers

2. Situational assessment

3. Visioning and strategic planning

4. Fitting the financial framework

5. Implementation of MUS interventions

6. Support to continuous service provision

Part 3

A: Evidence-based advocacy on potential and barriers of MUS

B: Capacity development at intermediate and national level

Tool 1 - Community meeting to raise interest in multiple use water services
Tool 2 - Getting in-depth information and lots of good ideas: focus group discussion
Tool 3 - Water user categorisation: Livelihood groups and wealth ranking
Tool 4 - Identification of water services and users
Tool 5 - Rapid Appraisal Process for MUS system
Tool 6 - Identification of user representation

Tool 2 - Getting in-depth information and lots of good ideas: focus group discussion
Tool 3 - Water user categorisation: Livelihood groups and wealth ranking
Tool 4 - Identification of users of multiple water use services
Tool 5 - Rapid Appraisal Process for MUS system
Tool 6 - Identification of user representation
Tool 7 - Community mapping
Tool 8 - Seeing is also learning: village walk
Tool 9 - RIDA: Analysis of water resources, infrastructure, demand and access
Tool 10 - Village water resources assessment
Tool 11 - Assessing demand for water for different uses
Tool 12 - Household questionnaire on water resources, infrastructure, water demand and use
Tool 13 - Water quantity measurements from water resources and infrastructure
Tool 14 - Surveying water resources and infrastructure
Tool 15 - Identification of water access constraints
Tool 16 - Data collection on Life-Cycle Costs
Tool 17 - Estimating the benefits of services

Tool 18 - MUS Visioning
Tool 19 - Strategy development
Tool 20 - Selection of technologies for multiple uses

Tool 16 - Data collection on Life-Cycle Costs
Tool 17 - Estimating the benefits of services

Tool 21 - Training of (community level) service providers

Tool 21 - Training of (community level) service providers
Tool 22 - Monitoring

Tool 4 - Identification of users of multiple water use services
Tool 16 - Data collection on Life-Cycle Costs
Tool 17 - Estimating the benefits of services
Tool 23 - Actor and task analysis

Tool 24 - Set-up and facilitation of a learning alliance

Part 4: Tools